



CARE
 Cancer Aid Resource & Education
*A compassionate community helping to improve the
 quality of life of Dona Ana County cancer patients*

Proudly partnered with
CAA
 COMMUNITY
 ACTION AGENCY
 OF SOUTHERN NEW MEXICO

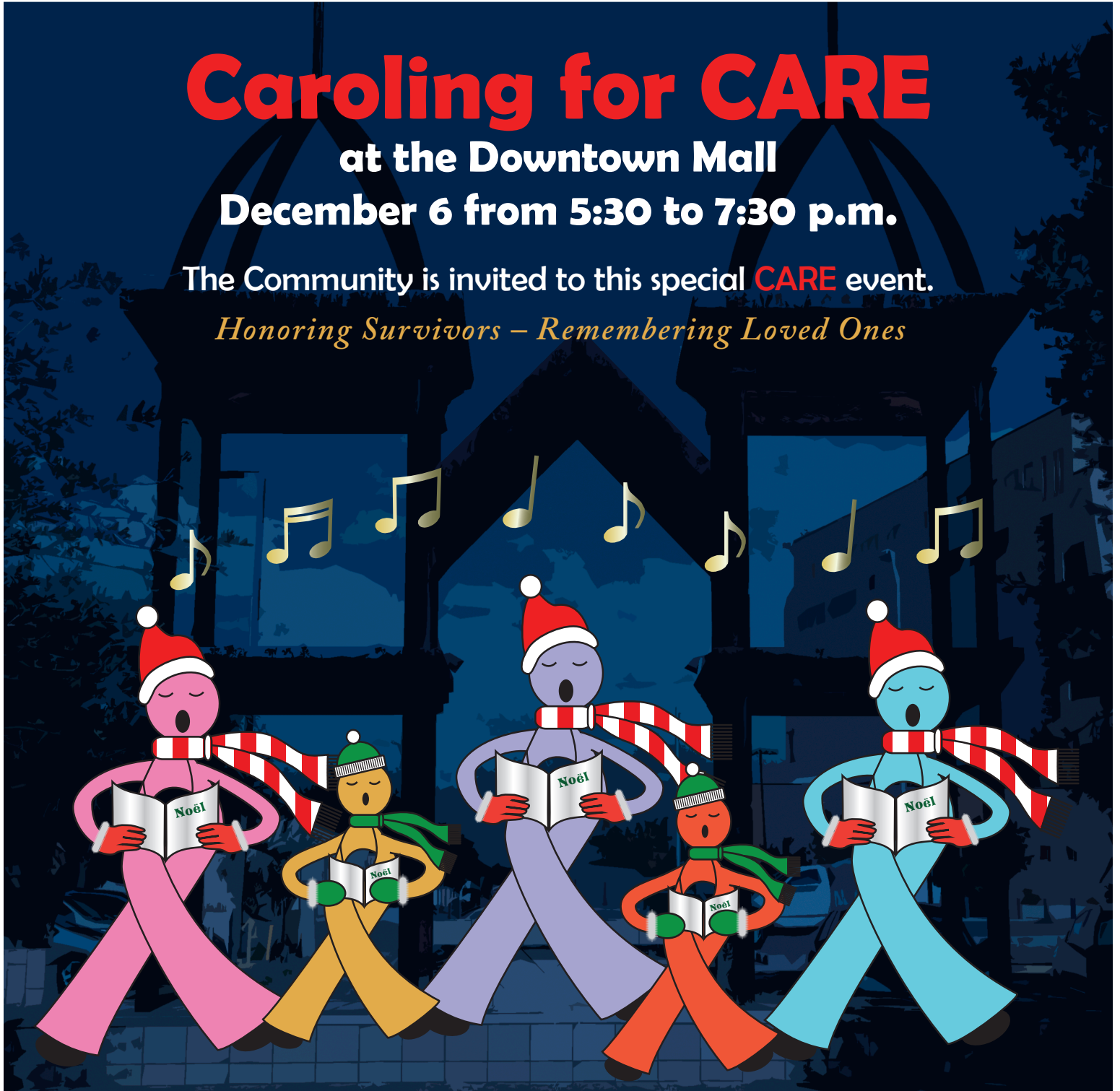
Caroling for CARE

at the Downtown Mall

December 6 from 5:30 to 7:30 p.m.

The Community is invited to this special **CARE** event.

Honoring Survivors – Remembering Loved Ones



LAS CRUCES SUN-NEWS
lcsun-news.com

**DOWNTOWN
 LAS CRUCES
 PARTNERSHIP**
 a new mexico main street community

*The Electric
 Company*
 El Paso Electric

For more information, please contact Yoli Diaz at 680-5922 or Leticia Soto at 650-2019.